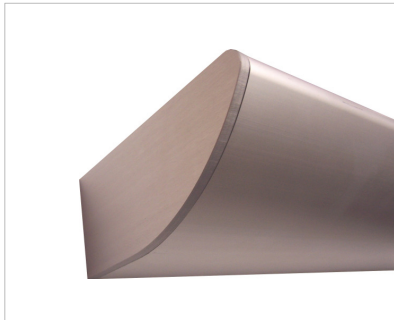


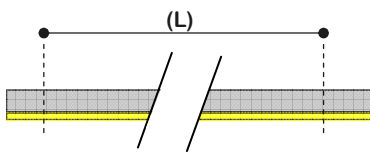
S70-160 Profile



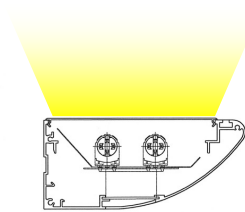
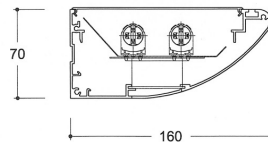
- Compact, wall mount profile
- Direct or indirect lighting function
- Engineered to accept reeded diffuser
- Applications range from wall light systems, singular bed head lighting and continuous, wall mount, corridor lighting
- SE - Screwless end cap option
- Anodised or powder coat finish

Specification

Length (m) **LINEA-LITE** **A70-160**



Length allowance	T5-FH	T5-FQ
600mm	14w	24w
900mm	21w	39w
1200mm	28w	54w
1500mm	35w	49w
Length allowance	T8	
610mm	18w	
1220mm	36w	
1530mm	58w	

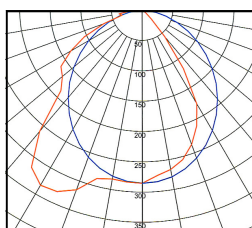


	Clear reed ✓
	Opal reed ✓
	Satin reed ✓
	Satin louvre ✗
	Mirror louvre ✗

Photometrics

Lamps

cd / 1000 lamp lumens



Dotted line 0 Degrees
Solid line 90 Degrees

1/54 T5 Lamp, Clear reeded diffuser

	Maximum lamps / section	Continuous diffuser	Continuous louvre	Overlapped lamps (Diffuser)
T5	2	✓	✗	✓ (1-lamp)
T8	2	✓	✗	✗
PL-L	1	✓	✗	✗